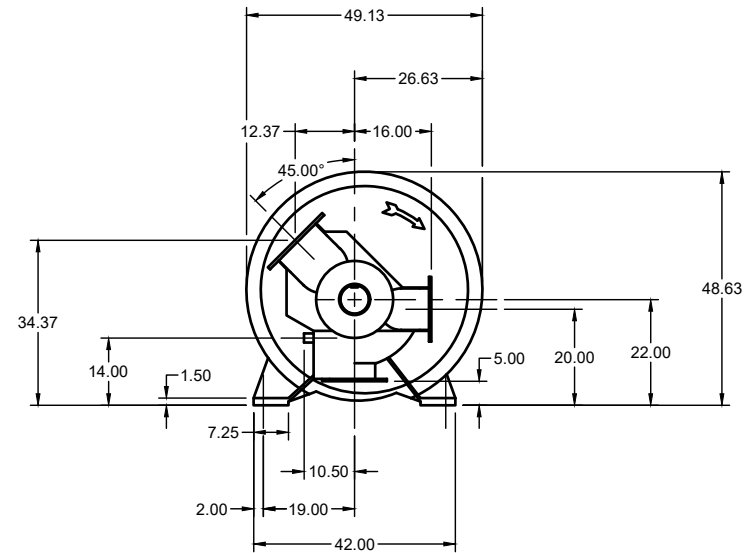
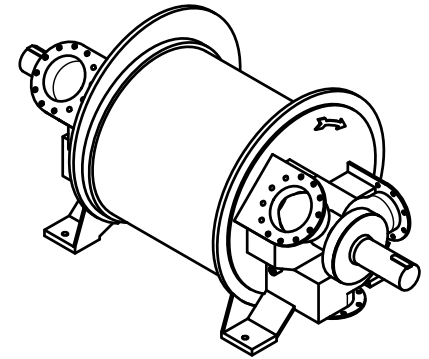


ASSEMBLY DIAGRAMS FACE FLOATING BEARING END
PUMP MAY BE DRIVEN FROM EITHER END TO
FACILITATE INSTALLATION
POSITION 4 IS STANDARD AS SHOWN



THIS DRAWING CONTAINS PROPRIETARY INFORMATION OF NES COMPANY INC. PERMISSION IS HEREBY GIVEN TO ANY NES CUSTOMER TO USE AND REPRODUCE THE INFORMATION CONTAINED HEREIN IN CONNECTION WITH THE CUSTOMER'S USE OF ANY NES PRODUCT. NO OTHER USE MAY BE MADE OF THIS INFORMATION WITHOUT WRITTEN PERMISSION FROM NES.

UNLESS OTHERWISE NOTED			
DIMENSIONAL UNITS ARE:	INCHES		
TOLERANCES			
GENERAL	MOUNTING HOLE LOCATIONS	PIPE CONNECTION LOCATIONS ≤ 2" NPS	PIPE CONNECTION LOCATIONS > 2" NPS
±.13	±.13	±.50	±.25



PROPRIETARY AND CONFIDENTIAL
THE INFORMATION CONTAINED IN THIS DRAWING IS THE SOLE PROPERTY OF NES COMPANY INC.
ANY REPRODUCTION IN PART OR AS A WHOLE WITHOUT THE WRITTEN AND EXPLICIT PERMISSION OF NES COMPANY INC. IS PROHIBITED.

APPROVED	20XX.XXX.XX
CHECKED PH	2024.JUN.07
DRAWN JP	2024.JUN.06

PROJECT NES Company Inc.			
TITLE NP 2160 Bare Shaft Drawing Double Shaft Configuration			
SIZE A	CODE	DWG NO 14-172160	REV B
SCALE 1:45	WEIGHT 7430 LBS.	SHEET 1/1	