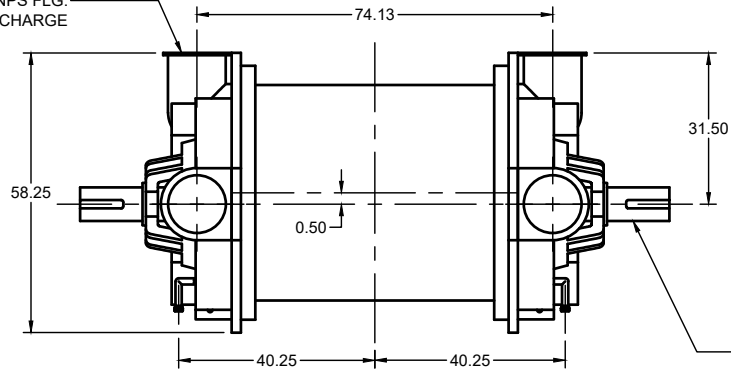
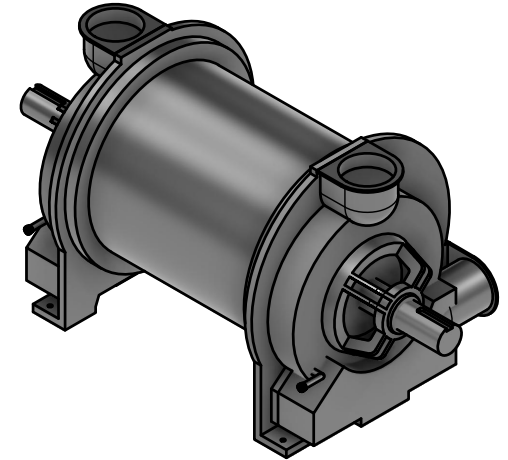
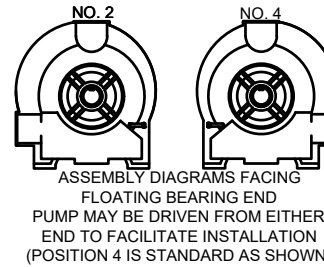


TWO 10-IN. NPS FLG.
SIDE DISCHARGE

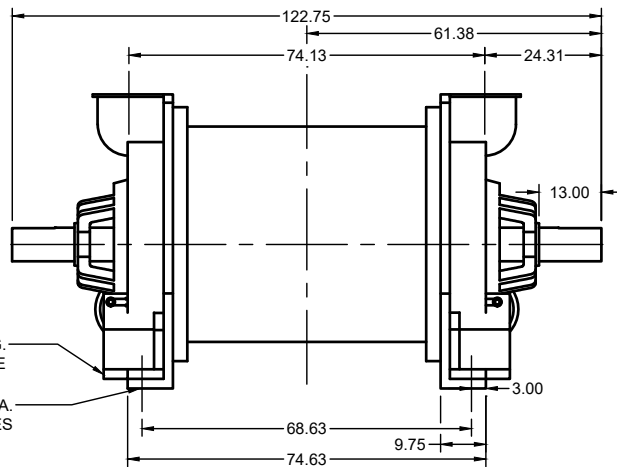


7.000 +.000 / -.001 SHAFT DIA.
1.75 X .75 KEYWAY



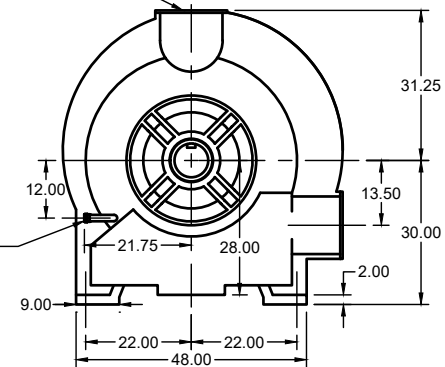
TWO 10-IN. NPS FLG.
BOTTOM DISCHARGE

FOUR 1.75 DIA.
MOUNTING HOLES



TWO 12-IN. NPS FLG.
INLETS

1 1/2 NPT LIQUID SEAL
CONNECTION (BOTH ENDS)



THIS DRAWING CONTAINS PROPRIETARY INFORMATION OF NES COMPANY INC. PERMISSION IS HEREBY GIVEN TO ANY NES CUSTOMER TO USE AND REPRODUCE THE INFORMATION CONTAINED HEREIN IN CONNECTION WITH THE CUSTOMER'S USE OF ANY NES PRODUCT. NO OTHER USE MAY BE MADE OF THIS INFORMATION WITHOUT WRITTEN PERMISSION FROM NES.

UNLESS OTHERWISE NOTED			
DIMENSIONAL UNITS ARE:	INCHES		
TOLERANCES			
GENERAL	MOUNTING HOLE LOCATIONS	PIPE CONNECTION LOCATIONS ≤ 2" NPS	PIPE CONNECTION LOCATIONS > 2" NPS
±0.13	±0.06	±0.50	±0.25



PROPRIETARY AND CONFIDENTIAL
THE INFORMATION CONTAINED IN THIS DRAWING IS THE
SOLE PROPERTY OF NES COMPANY INC.
ANY REPRODUCTION IN PART OR AS A WHOLE WITHOUT THE
WRITTEN AND EXPLICIT PERMISSION OF NES COMPANY INC.
IS PROHIBITED.

PROJECT

NES Company Inc.

TITLE

N904 R Series
Bare Shaft Pump
Double Extended Shaft

APPROVED	20XX.XXX.XX
CHECKED	20XX.XXX.XX
DRAWN JP	2024.MAR.05

SIZE	CODE	DWG NO	REV
A			A
SCALE 1:40	WEIGHT	SHEET 1/1	