

NX Series

Liquid Ring Vacuum Pumps

Models: NX-35,45,60,80,100,130,250, 350 and 500



Description: Single-Stage Liquid Ring Vacuum Pump

Type: Single Cone

Models: NX-35, 45, 60, 80, 100, 130, 250, 350, and 500

Power Range: 7.5 - 200 HP

Capacity Range: 115 - 3000 CFM

Max Vacuum: 28" Hg

OVERVIEW

Our NX Series are designed as drop-in replacements for the Nash* classic XL/GL series vacuum pumps, designed to have only one moving part to induce maximum mechanical stability and reliability. This single cone liquid ring vacuum pump is suited to deliver vacuum at maximum capacity in tough conditions with liquid carryover and particulate slugs. We offer version with capacities ranging from 115-3000 CFM.

CONSTRUCTION

Available in NX- 35, 45, 60, 80, 100, 130, 150, 250, 350 & 500 (up to 3000 CFM). Standard construction is Stainless steel with Teflon packing. NES provides Stainless Steel Single Cone Liquid Ring vacuum pumps that are factory performance tested and include a 2-year warranty.

FEATURES

- **Drop-in replacement** for Nash* XL/GL series
- Standard construction is robust **Stainless Steel** with Teflon Packing.
- Optional 304 or 316 **Stainless Steel construction**. Cast Iron construction available for models 35 – 130.
- Optional factory installed **mechanical seals**.
- **Parts and repair kits available** to fit Nash* XL/GL Series
- Available in bare pump, direct drive or V-belt systems.
- **2-year factory warranty** against manufacturer's defects.



NOTES

These pumps have been designed to be drop-in replacements for classic Nash* XL/GL Series pumps. NES NX Series liquid ring vacuum pumps are factory performance tested and include a 2-year warranty against manufacturing defects.

NX Series

Liquid Ring Vacuum Pumps

Models: NX-35,45,60,80,100,130,250, 350 and 500



GENERAL TECHNICAL DATA

Model	Max Vacuum ["Hg]	Speed [RPM]	Capacity [CFM] @ 20" Hg	Motor Power [HP]	Inlet [in]	Discharge [in]	Seal Water Usage [GPM]	Seal Water Size [in]	Pump Weight Dry [lbs.]	
									Ductile Iron	Stainless Steel
NX - 35	28	1450	115	7.5	3 FL	2 FL	1.5 - 3	½ NPT	204	216
		1750	145	10						
		2300	190	15						
NX - 45	28	1450	160	10	3 FL	2 FL	1.5 - 3	½ NPT	217	231
		1750	195	15						
		2300	260	20						
NX – 60	28	980	195	10	4 FL	3 FL	5 - 10	¾ NPT	360	395
		1170	240	15						
		1450	305	20						
		1750	365	25						
NX – 80	28	980	260	15	4 FL	3 FL	5 - 10	¾ NPT	400	435
		1170	320	20						
		1450	420	25						
		1750	500	40						
NX - 100	28	800	290	20	4 FL	4 FL	6 - 12	1 NPT	634	662
		880	320	20						
		980	380	20						
		1170	460	25						
		1450	560	40						
NX – 130	28	800	400	25	4 FL	4 FL	6 - 12	1 NPT	699	733
		880	455	25						
		980	510	25						
		1170	620	40						
		1450	775	50						
NX – 150	28	750	500	25	6 FL	4 FL	12-24	1 NPT	803	
		880	600	30						
		980	680	35						
		1170	830	45						
		1250	920	55						
NX – 250	25	600	730	40	6 FL	6 FL	14-28	1 NPT		
		705	875	40						
		750	940	40						
		880	1100	60						
		980	1225	75						
		1080	1340	75						
NX – 350	25	500	1120	50	8 FL	6 FL	15-30	1 ½ NPT	2348	
		600	1360	60						
		705	1625	75						
		750	1730	100						
		880	2000	125						
NX – 500	25	450	1825	75	10 FL	8 FL	25-50	2 NPT		
		500	2050	100						
		590	2460	125						
		705	2900	150						
		735	3000	200						

NX Series

Liquid Ring Vacuum Pumps

Models: NX-35,45,60,80,100,130,250, 350 and 500



Variation Table

Variation Table	Particulars
Metallurgy	Standard SS: ACl CF 3M
	Stainless Steel 304
	Stainless Steel 316L
	Ductile Iron
	Bronze
Direction	Clockwise Rotation
Purpose	Vacuum Pump
	Compressor
Sealing	Standard Available as Gland Packing
	Available with Single Seal
	Available with Single Cartridge Seal
	Available with Dual Cartridge Seal and Seal Pot
Configuration	Once Through
	Partial Recovery
	Full Sealant Recovery
Other System Configuration	Simplex
	Duplex
	Triplex
	Quadruplex

NX Series



Liquid Ring Vacuum Pumps

Models: NX-35,45,60,80,100,130,250, 350 and 500

Vacuum pump Length, Height, Breadth, Keyway, Shaft diameter

Model	Length (Inches)	Height (Inches)	Breadth (Inches)	Keyway (Inches)	Shaft diameter (Inches)
NX – 35	35	13.4	14	0.4724 X 0.197	1.6543
NX – 45	33	13.4	14	0.4724 X 0.197	1.6543
NX – 60	36	17	16	0.551 X 0.218	1.8905
NX – 80	39	17	16	0.551 X 0.218	1.8905
NX – 100	42	19	20	0.709 X 0.276	2.3634
NX – 130	46	19	20	0.709 X 0.276	2.3634
NX – 250	55	26	25	0.866 X 0.354	3.1496
NX – 350	64	29	31	0.866 X 0.354	3.3465
NX – 500	81	39	41	0.984 X 0.354	3.7402

Application table

Variation	Applications
High Vacuum	Central Vacuum Systems
	De-aeration
	Drying
	Evaporating
	Autoclaves
	Evaporating
	Priming
	Forming
	Fiber Setting
	Gas Stripping
	Molding
	Power Plants
	Container Filling
Water Handling	Filtering
	Extruder Venting
	Eviscerating
	Foods & Fats

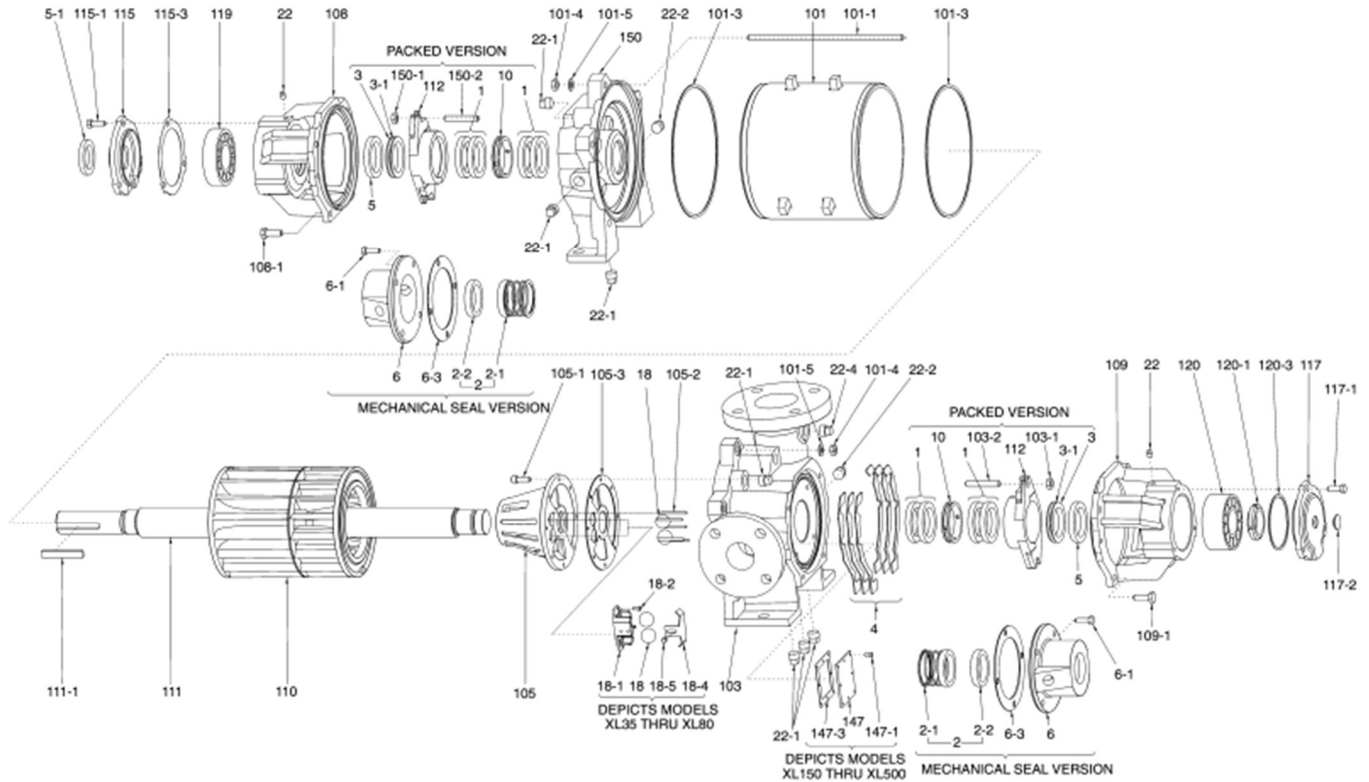
NX Series

Liquid Ring Vacuum Pumps

Models: NX-35,45,60,80,100,130,250, 350 and 500



Exploded View



NX Series

Liquid Ring Vacuum Pumps

Models: NX-35,45,60,80,100,130,250, 350 and 500



Material Details

Index No	Description	Quantity	Index No	Description	Quantity
1	*Packing	4	105 – 1	Bolt, I.E. Cone	20
2	*Seal Assembly	2	105 – 2	Studs	AR
3	Slinger	2	105 – 3	*Gasket, I.E. Cone	1
3 – 1	Spring	2	108	Bearing Bracket, D.E.	1
4	*Shim	AR	108 – 1	Bearing Bracket Bolt, D.E.	4
5	*Lip Seal	2	109	Bearing Bracket, I.E.	1
5 – 1	*Lip Seal, D.E.,Outer	1	109 – 1	Bearing Bracket Bolt, I.E.	4
6	Retainer Seal	2	110	Rotor	1
6 – 1	Retainer Seal Bolt	8	111	Shaft	1
6 – 3	Retainer Seal Gasket	2	111 – 1	Shaft Key	1
10	Lantern Gland	2	112	Gland	2
18	Check Valve Ball	2	115	Cap, Outer D.E.	1
18 – 1	Check Valve Ball Retainer	1	115 – 1	Bolts, D.E. Outer Bearing Cap	3
18 – 2	Retainer Screw	2	115 – 3	*Gasket, D.E. Outer Bearing Cap	1
18 – 4	Stop Plate	1	117	Cap, Outer I.E.	1
18 – 5	Stop Plate Screw	1	117 – 1	Bolts, I.E. Outer Bearing Cap	3
22	Pipe Plugs	2	117 – 2	Cap, Inner D.E.	1
22 – 1	Pipe Plugs	7	117 – 3	*Gasket, I.E. Outer Bearing Cap	1
22 – 2	Pipe Plugs	2	119	*Bearing, D.E	1
22 – 4	Pipe Plugs	1	120	*Bearing, I.E.	1
101	Body	1	120 – 1	*Locknut, I.E. Bearing	1
101 – 2	Axial Rod	5	120 – 3	*Lockwasher, I.E. Bearing	1
101 – 3	*Gasket	2	147	Cover Plate	1
101 – 4	Rod Nuts	AR	147 – 1	Cover Plate Screw	6
101 – 5	Rod Washers	AR	147 – 3	Cover Plate Gasket	1
103	Head, I.E.	1	150	End Plate	1
103 – 1	Gland Nut, I.E.	2	150 – 1	Gland Nut, D.E.	2
103 – 2	Gland Stud, I.E.	2	150 – 2	Gland Stud, D.E.	2
105	Cone, I.E.	1			
*Recommended Spare Parts.					
AR – As Required.					

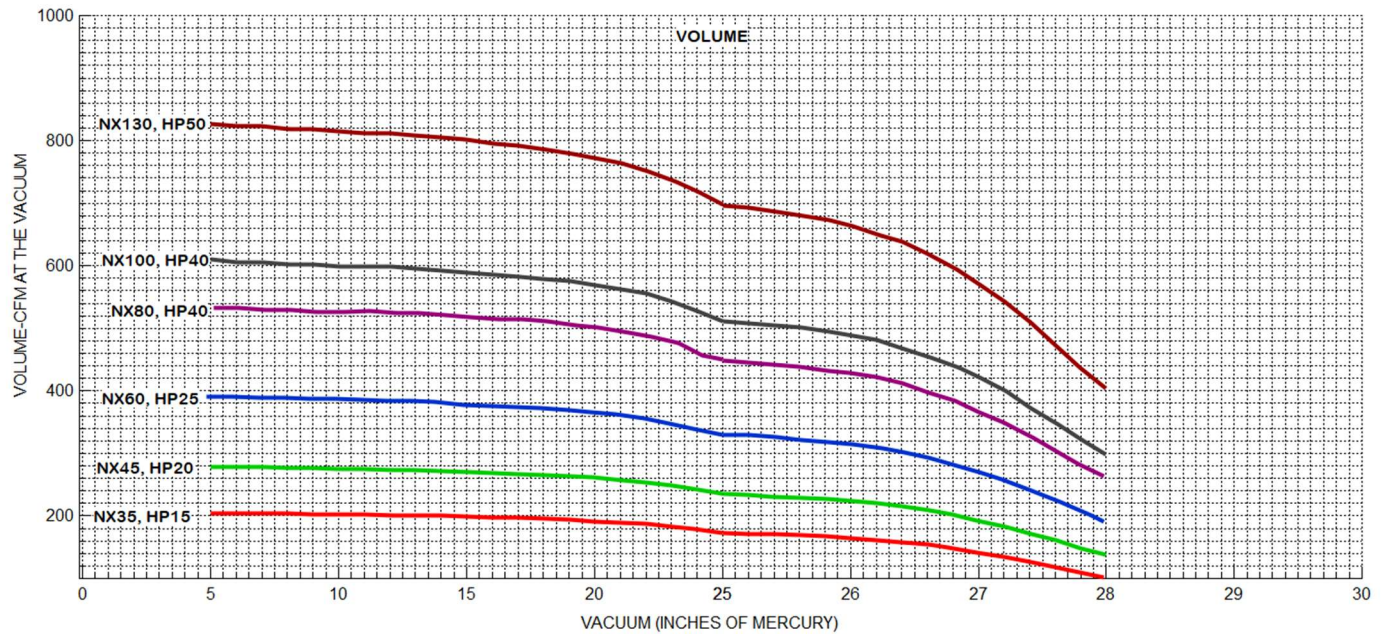
NX Series

Liquid Ring Vacuum Pumps

Models: NX-35,45,60,80,100,130,250, 350 and 500



Composite Curve NX35, NX45, NX60, NX80, NX100, NX130



NX Series

Liquid Ring Vacuum Pumps

Models: NX-35,45,60,80,100,130,250, 350 and 500



Composite Curve NX250, NX350, NX500

