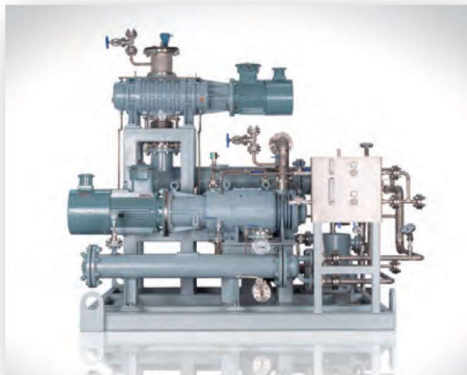


NES Company Inc. Process Vacuum Skids and Tailor-Made Solutions

NES Company Inc. boasts over 20 years of experience in the vacuum world serving plants and facilities in Food, Energy, Chemical, Petrochemical, Pharmaceutical, Medical Health Services, Composites, Automotive, Aerospace, Sugar, Papermaking, Cheesemaking, and much more!



NES Company Inc. delivers the most reliable, efficient, and safe engineered-to-order solutions available in the market.



*Installation support is available.

Our engineered skids span across technologies such as:

- Liquid Ring Compressors
- Air & Steam Ejectors
- Vacuum Boosters
- Roots Type Blowers
- Liquid Ring Vacuum Pumps
 - Flat Pate
 - Conical Lobe
 - Single Stage
 - Two-Stage
- Oil-Flooded Rotary Vane Vacuum Pumps
- Dry Screw Vacuum Pumps
- Two-Stage Rotary Vane Vacuum Pumps

APPLICATION-BASED PRODUCT SELECTION GUIDE

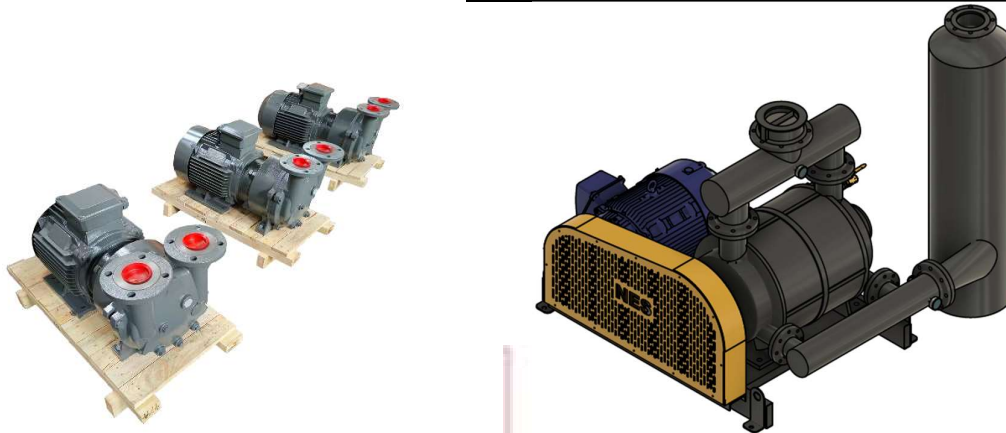
Typical Applications	LRVP	Ejector	Compressor	Hybrid	Dry Screw	Typical Applications	LRVP	Ejector	Compressor	Hybrid	Dry Screw
CHEMICAL & PETROCHEMICAL						WATER TREATMENT					
Reactor Vacuum	X	X		X	X	Vacuum Filters	X				
Vacuum Distillation	X	X		X	X	Digester Gas Recirculation			X		
Evaporator Vacuum	X	X		X	X	STEEL					
VCM Recovery	X		X			Degassing		X		X	
Vacuum Filtration	X		X			Vacuum Filtration	X				
Explosive & Corrosive Gas Compression	X		X			FOOD & BEVERAGE					
Solvent Recovery	X				X	Cookers	X				
Drying	X		X			Bottling	X				
Extrusion	X					Sterilizing	X				X
PETROLEUM						Deodorizing	X	X		X	
Vacuum Distillation	X	X		X		Bleaching	X	X			
Vent (Fuel) Gas Compression	X		X			Drying	X	X			
Dewaxing Filters	X		X			Evaporating	X	X		X	X
Crude Stabilization	X					Distilling	X	X			
PHARMACEUTICAL						Rendering	X				
Drying	X			X	X	Freeze-Drying					X
Reactor Vacuum	X			X	X	Vacuum Pans	X				
Distillation	X			X	X	Vacuum Filters	X				
Evaporation	X			X	X	Milking	X				
Crude Stabilization	X					Eviscerators	X				
ELECTRONICS						Gas Compression			X		
Chucking (Process Vacuum)	X				X	Packaging	X				
Deaeration	X			X		GENERAL					
MINING						Central Vacuum	X				X
Vacuum Filtration	X					Extruding	X				
Methane Drainage	X					Sterilizers	X				X
Glass Forming	X					Drying	X				
						Chucking	X				
						Packaging	X				
						Glass Forming	X				

Documentation:

Bare Pumps are tested with Pneurop 6612/1984, BS 1571-Part 2, Nash Orifice method and other standards, available with the package.

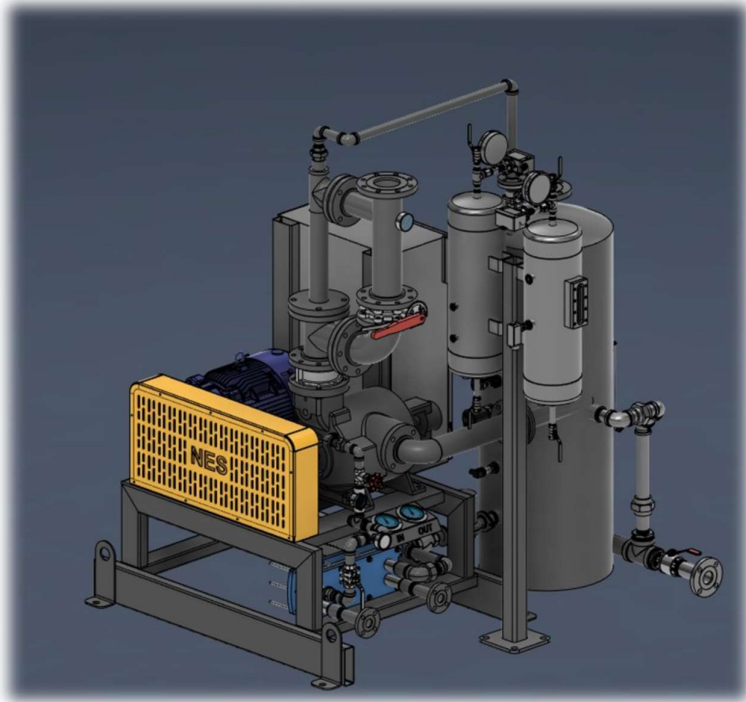
Majority of NES Pumps are made from API Approved foundry.

Configurations	System Metallurgy
Simplex	Cast Iron
Duplex	Stainless Steel 304
Triplex	Stainless Steel 316
Quadruplex	Duplex Steel
	Carbon Steel
	Bronze

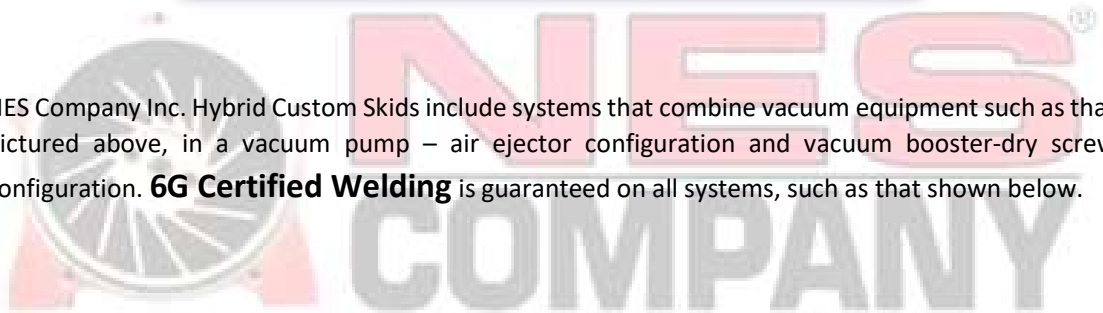


Coupling Configuration	Liquid Ring System Configuration	Mechanical Seal Variations
V-Belt	Once-Through	Single Component
Direct Coupling	Partial Recovery	Single Cartridge
Gear Driven	Full Recirculation	Dual Cartridge w/ Seal Pot
Variable Frequency Drive	Hybrid Skid	





NES Company Inc. Hybrid Custom Skids include systems that combine vacuum equipment such as that pictured above, in a vacuum pump – air ejector configuration and vacuum booster-dry screw configuration. **6G Certified Welding** is guaranteed on all systems, such as that shown below.



Electricals encompass TEFC, all NEMA and IEC, IP54, IP55, in 230-460V/110-120V, 1/3 Phase 50/60Hz, with or without VFD.

- Control panels of NEMA 4X to 12X according to the needs of each site of installation.

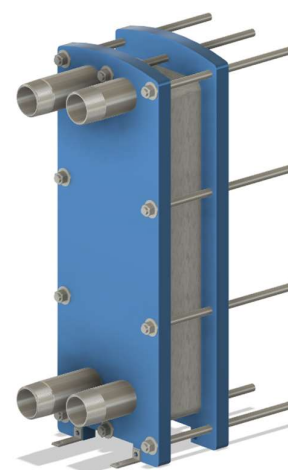


Preferred Manufacturers Include:

Baldor, WEG, Marathon, Lesson and others.



<i>Signature USP</i>	<i>Heat Exchanger</i>
Powder-Coated Coupling Guard	Shell & Tube
B31.1 6G Welding Standard	Bronze, SS
Drawing Approval in Fusion 360 with BOM	Air-Cooled
	Plate & Frame
	ASME Coded



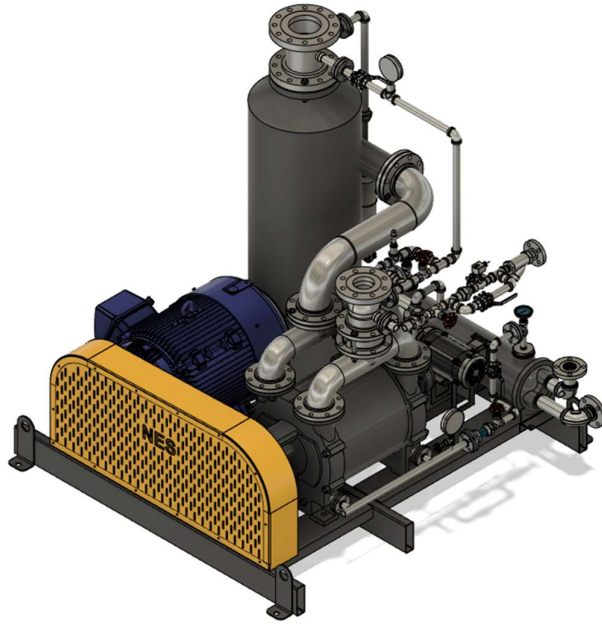
From 20-60000 CFM, 3-29.9" Hg Vacuum and from 5-100 PSI Compression.

We offer both process vacuum systems and engineered solutions including but not limited to:

Process Vacuum Systems	Dry Screw Process Vacuum Systems available as skid
Solvent Recovery Systems	Distillation
Boosted Liquid Ring Systems	Evaporation
Hybrid Jet Liquid Ring Systems	Reaction
Oil-Sealed Liquid Ring systems	Drying
Dehydration Systems	Pervaporation
Gas Phase MSDU	Refrigeration
Liquid Phase MSDU	Degassing
Membrane Dehydration Systems	Molecular Distillation
Flash Evaporation Systems	Concentration
Methanol Recovery Systems	Freeze-Drying
Ethanol Dehydration	Crystallization
Isopropyl Alcohol Dehydration	Filtration
Methanol Dehydration	Vacuum Pressure Impregnation (VPI)
Soil Vapor Extraction	Adsorption
Vacuum Deaeration	Absorption
Vacuum Degassing	Desorption
Vacuum Deposition	Deodorization
Vacuum Distillation	Chemical Process
Vacuum Drying	Pharmaceutical Process
Vacuum Evacuation	Petrochemical Process
Vacuum Extrusion	Food Process
Vacuum Filtration	Vapor Recovery Unit (VRU)
Vacuum Flash Cooling	Coating
Vacuum Impregnation	Vacuum Casting
Vacuum Priming	Vacuum Furnace
Vacuum Sterilization	Central Vacuum

Enclosures constructed for any environmental control situation, including but not limited to:

Sound enclosures
Barrier walls
Thermal enclosures
Generator and compressor enclosures



Certifications available:

- ASME "U" & "R" Stamps
- ANSI & ASME Certified
- DOT & NFPA Certified

Separators:

Intake	Discharge/Storage Tank
Carbon Steel and Stainless Steel 304 and 316 Configurations	Non-ASME (CS and SS)
	ASME coded (CS and SS)

System Intake and Discharge are ANSI Class 150/300 Flanged Connections. Instrumentation and all fluid elements are US-made.

Sealing fluids for liquid ring vacuum pumps vary greatly and include but are not limited to:

Water	Oils	Solvents
	Synthetic	Sulfuric Acid
	Mineral	Methanol

NES Company Inc. offers technical support in the form of:

Startup Assistance
Genuine Spare Parts
Annual Maintenance
Preventative and Corrective Maintenance
Troubleshooting assistance
Fiberscope Inspection On-Site

Recommended spare parts list:

Repair Kits
Impellers
Cones / Port Plates
Fluid Parts
Mechanical Seals
Bearing Sets

