

NP Series

Single Stage Dual Cone Liquid Ring Vacuum Pump

Models: NP2160, NP2200, NP2280, NP2620



Description: NP Series Single Stage Liquid Ring Vacuum Pump.

Models: NP2160, NP2200, NP2280, NP2620

Power Range: 160-1160 HP

Capacity Range: 4050-22400 CFM

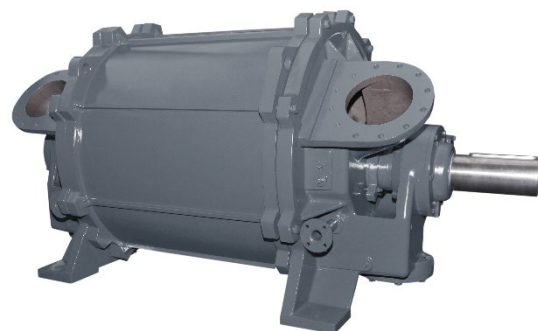
Max Vacuum: 24.5" Hg

OVERVIEW

Our NP series liquid ring vacuum pump is manufactured to be a bolt-in replacement for the NASH Premier Series vacuum pumps. This series is a perfect match for those who are looking for a bolt-in replacement for their NASH Premier Series vacuum pump or an upgrade from their previous single stage liquid ring vacuum pump. NP Series vacuum pumps are factory-tested and are offered with a 2-year warranty against manufacturing defects.

CONSTRUCTION

The NP series liquid ring vacuum pump is constructed in standard cast iron with optional stainless-steel metallurgy available. Mechanical seals, repair kits, and spare parts are readily available as well. From 4050-22400 CFM and 160-1160HP, this line of vacuum pump is suitable for working conditions of high-velocity flow, unexpected liquid carryover, and high-capacity applications.



FEATURES

- Bolt-in replacement for NASH Premier Series
- Standard construction is Cast iron / Stainless Steel Cladding
- Optional 304 or 316 Stainless Steel construction.
- Optional factory installed mechanical seals .
- Parts and repair kits available.
- Available in bare pump, direct drive or V-belt systems.
- 2-year factory warranty against manufacturing defects.

NOTES

NES Company Inc. is proud to offer our NP Series high performance vacuum pumps. The NP Series vacuum pumps are built for high-velocity flow at rough vacuum and large capacity. The NP Series spans a wide range of uses, from 4050 to 22400 CFM at a constant ultimate vacuum level of 24.5" Hg from 160 to 1160 HP. For bolt-in replacement of NASH Classic Premier 2000 vacuum pump or when searching for a new vacuum pump that is the same quality with competitive pricing, NES Company Inc. offers the NP Series vacuum pumps.

NES Company Inc. 333 Route 46 West, Building A, Fairfield, NJ 07004

(800) 297-3550 | www.nescompany.com | info@nescompany.com

© 2023 NES Company Inc. All rights reserved

NP Series
Single Stage Dual Cone
Liquid Ring Vacuum Pump
Models: NP2160, NP2200, NP2280, NP2620



GENERAL TECHNICAL DATA

Series Name	Replaces Nash Premier	Motor Power [HP]	CFM @ 15" Hg	Max Operating Vacuum [”HgV]	Inlet [Inch]	Outlet [Inch]	Seal Water Usage [GPM]	Seal Water Connection Size [Inch]
NP 2160	2160	160 – 360	4050 - 6950	24.5	10 FL	8 FL	106	1 ½ NPT
NP 2200	2200	220 - 560	5000 – 9000	24.5	10 FL	8 FL	114	1 ½ NPT
NP 2280	2280	280 – 560	6900 – 11180	24.5	12 FL	10 FL	120	2 NPT
NP 2620	2620	600 – 1160	14450 – 22400	24	16 FL	14 FL	190	3 NPT

NP Series

Single Stage Dual Cone Liquid Ring Vacuum Pump

Models: NP2160, NP2200, NP2280, NP2620



Variation Table

Variations Table	Particulars
Metallurgy	Standard Cast Iron
	Stainless Steel 304 cladded
	Stainless Steel 316L cladded
Direction	Clockwise
	Counter- Clockwise Rotation
Purpose	Vacuum Pump
Shaft	Single extended
	Double extended
Sealing	Standard Available as Gland Packing
	Available with Single Seal
	Available with Single Cartridge Seal
	Available with Dual Cartridge Seal and Seal Pot
Configuration	Once Through
	Partial Recovery
	Full Sealant Recovery
Other System Configuration	Simplex
	Duplex
	Triplex

NES Company Inc. 333 Route 46 West, Building A, Fairfield, NJ 07004

(800) 297-3550 | www.nescompany.com | info@nescompany.com

© 2023 NES Company Inc. All rights reserved

NP Series

Single Stage Dual Cone Liquid Ring Vacuum Pump

Models: NP2160, NP2200, NP2280, NP2620



Vacuum pump weight

Model	Pump Weight Dry (Lbs)	
	Iron	St. Steel
NP 2160	7430	-
NP 2200	8200	-
NP 2280	14740	-
NP 2620	34100	36800

Application table

Applications
Pulp and Paper Processing
Power Generation
Chemical Processing
Petrochemical Processing

NES Company Inc. 333 Route 46 West, Building A, Fairfield, NJ 07004

(800) 297-3550 | www.nescompany.com | info@nescompany.com

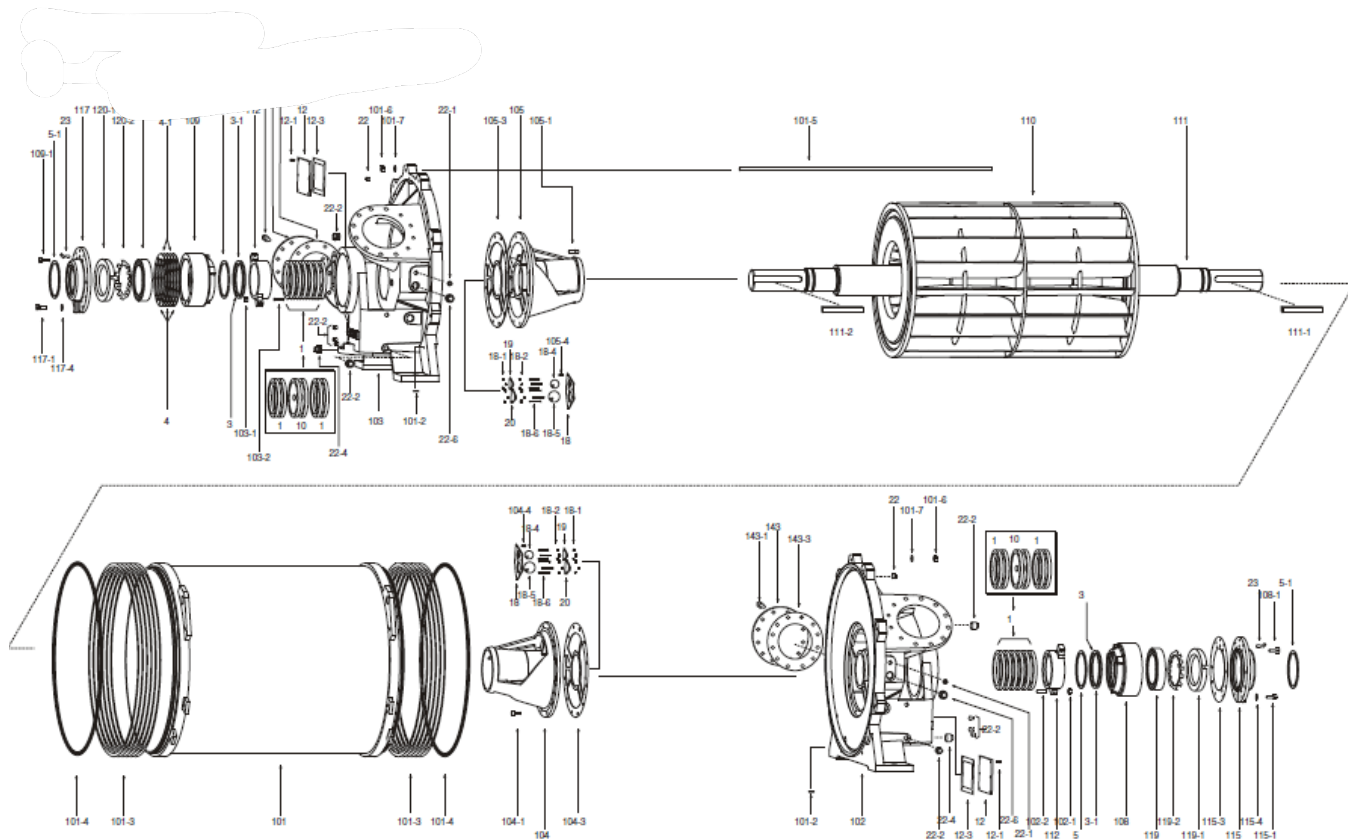
© 2023 NES Company Inc. All rights reserved

NP Series Single Stage Dual Cone Liquid Ring Vacuum Pump

Models: NP2160, NP2200, NP2280, NP2620



Exploded View



NES Company Inc. 333 Route 46 West, Building A, Fairfield, NJ 07004

(800) 297-3550 | www.nescompany.com | info@nescompany.com

© 2023 NES Company Inc. All rights reserved